



INNOVATIVE DESIGNS
FOR CREATIVE SPACES.

Allied CaseWorks

Base and Wall Cabinets



Base and Wall Cabinets Shown
With Adjustable Shelves and
Lockable Doors and Drawers.
Shown in Bleached Legno Finish



Modular solutions with built-in mobility to grow with you. Allied Caseworks offers the most creative and flexible options for utilizing every inch of space.

Mobile Base Cabinets

CaseWorks Mobile Base Cabinets

Features:

- Modular mobile and fixed work surface solutions with built-in storage options
- Concealed casters allow easy reconfiguration
- Premium hardware for long-term reliability
- Custom finishes to let you design your way
- Design build options available for project orders
- Best in industry lead times

Specifications

Work Surface: 1¼" Thick 45 lb. density particleboard with phenolic backer. Long-life high pressure laminate (HPL) surface with 3mm PVC edge with ⅛" radius edges. Heights: 30, 36 or 42 inch.

Cabinet Bases: ¾" Thick particleboard with high pressure or thermally fused laminate throughout. Cabinets assembled using dowel and glue joinery. Base cabinet bottoms are sealed for moisture protection.

Caster & Levelers: Cabinets include four heavy duty casters and levelers that are easily adjustable from inside the cabinet to raise, lower or lock the cabinets in place.

Cabinet Doors & Shelves: ¾" Thick 3-ply engineered wood with high pressure laminate faces. Exposed edges trimmed with 3mm PVC. Shelves adjust in 1¼" increments.

Door Hardware: Fully-adjustable concealed hinges or fixed exposed hinges. Handles available in designer or loop pulls. Individual or matching key locks available.

Full 4-Sided Drawer Boxes: Zinc-coated steel side-mount ball bearing drawer glides and metal drawer sides with epoxy finish. Hold-in detent ensures drawers stay closed. Lever release for easy drawer removal.

Laminate Finishes: Available in standard Wilsonart or Formica colors for project orders.



Base Cabinet with Doors, Drawers and Locks
Shown in Bleached Legno Finish



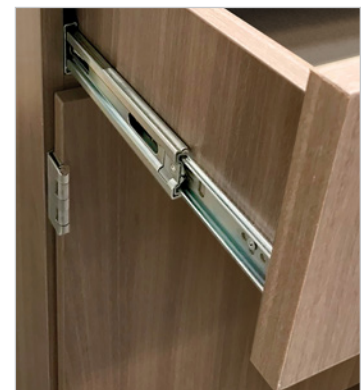
Five Drawer Option



Open Shelf Option



Casters Are Bolted Through
Steel Reinforcing Plates.
Levelers Extend To Lock
Cabinet In Place

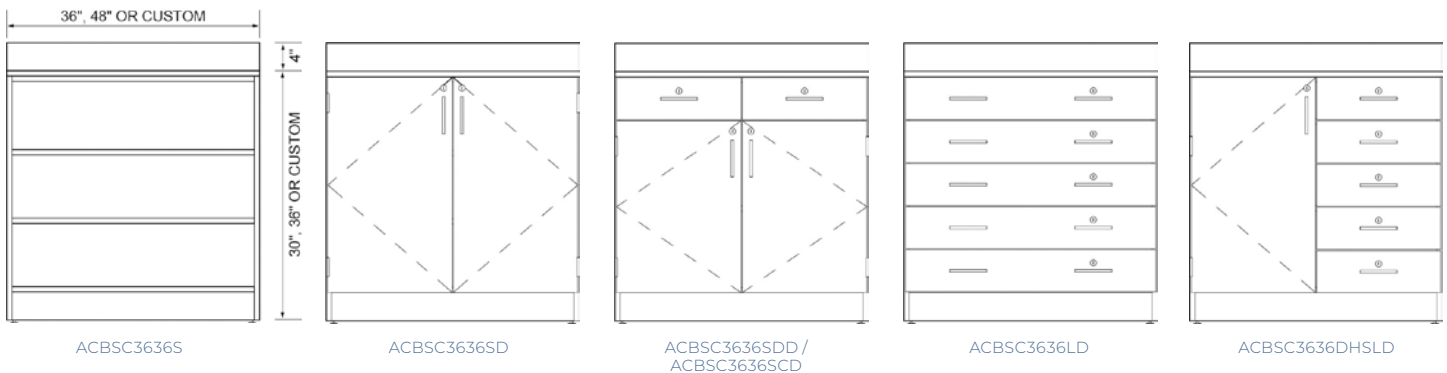


High-Quality Steel Hardware
throughout; Drawer Glides,
Pulls, Hinges And Corner
Braces

Custom laminate and edge band colors are available. Contact your dealer for pricing. Minimum order quantities may apply.

Model No.	Description Shape and Size
ACBSC3036S	30x36" Base Cabinet with two Shelves. 26" Depth
ACBSC3636S	36x36" Base Cabinet with two Shelves. 26" Depth
ACBSC3036SD	30x36" Base Cabinet with two Shelves & Doors. 26" Depth
ACBSC3636SD	36x36" Base Cabinet with two Shelves & Doors. 26" Depth
ACBSC3036SDD	30x36" Base Cabinet. 1 Shelf, Doors and Drawers. 26" Depth
ACBSC3636SDD	36x36" Base Cabinet. 1 Shelf, Doors and Drawers. 26" Depth
ACBSC3036LD	30x36" Base Cabinet. Locking Drawers. 26" Depth
ACBSC3636LD	36x36" Base Cabinet. Locking Drawers. 26" Depth
ACBSC3036DHSLD	30x36" Base Cabinet. Half Shelf, Locking Drawers & Doors. 26" Depth
ACBSC3636DHSLD	36x36" Base Cabinet. Half Shelf, Locking Drawers & Doors. 26" Depth
ACBSC3036SCD	30x36" Sink Base Cabinet. Locking Doors. 26" Depth
ACBSC3636SCD	36x36" Sink Base Cabinet. Locking Doors. 26" Depth
ACBSC2630SCD	30x26" Corner Base Cabinet. 26" Depth
ACBSC2636SCD	36x26" Corner Base Cabinet. 26" Depth
ACB3012FILL	30x12" Base Cabinet Filler. 26" Depth
ACB3612FILL	36x12" Base Cabinet Filler. 26" Depth

48" Widths Also Available For All Models Above.



CaseWorks Wall Cabinets

CaseWorks Wall Cabinets

Features:

- Innovative fixed storage solutions
- Premium hardware for long-term reliability
- Custom finishes to let your design your way
- Design build options available for project orders
- Best in industry lead times

Specifications

Cabinet Body: $\frac{3}{4}$ " Thick particleboard with high pressure or thermally fused laminate throughout. Cabinets assembled using dowel and glue joinery. Heights: 30, 36 or 42 inch.

Cabinet Doors: $\frac{3}{4}$ " Thick 3-ply engineered wood with high pressure laminate faces. Edged on all sides with 3mm PVC.

Cabinet Shelves: $\frac{3}{4}$ " Thick 3-ply engineered wood with high pressure laminate faces. Exposed edges trimmed with 3mm PVC. Shelves adjust in $1\frac{1}{4}$ " increments.

Door Hardware: Fully-adjustable concealed hinges or fixed exposed hinges. Handles available in designer or loop pulls. Individual or matching key locks available.

Laminate Finishes: Available in standard Wilsonart or Formica colors for project orders.



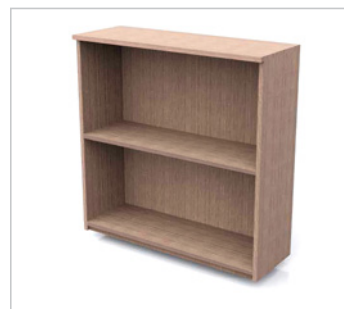
Wall Cabinets Shown With 2 Lockable Doors and Adjustable Shelves, Shown in Bleached Legno Finish



Wall Cabinet with 2 Locking Doors



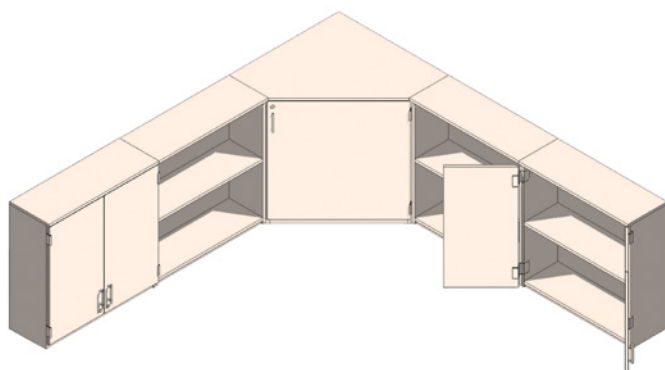
Showing Interior



Wall Cabinet with Shelves

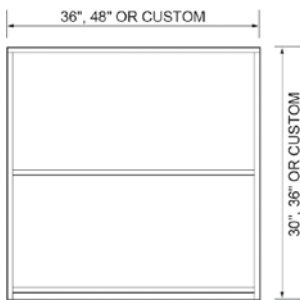


Corner Cabinet

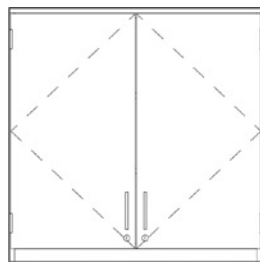


Custom laminate and edge band colors are available. Contact your dealer for pricing. Minimum order quantities may apply.

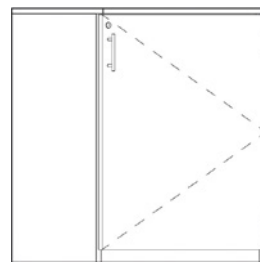
Model No.	Description Shape and Size
ACWC2436S	24x36" Wall Cabinet with Shelf. 13" Depth
ACWC2448S	24x48" Wall Cabinet with Shelf. 13" Depth
ACWC3036S	30x36" Wall Cabinet with Shelf. 13" Depth
ACWC3048S	30x48" Wall Cabinet with Shelf. 13" Depth
ACWC2436SLD	24x36" Wall Cabinet with Shelf & Locking Doors. 13" Depth
ACWC2448SLD	24x48" Wall Cabinet with Shelf & Locking Doors. 13" Depth
ACWC3036SLD	30x36" Wall Cabinet with Shelf & Locking Doors. 13" Depth
ACWC3048SLD	30x48" Wall Cabinet with Shelf & Locking Doors. 13" Depth
ACWCC2436SLD	24x27" Corner Wall Cabinet with Shelf & Locking Doors. 13" Depth
ACWCC2448SLD	24x30" Corner Wall Cabinet with Shelf & Locking Doors. 13" Depth
ACWC2412FILL	24x12" Wall Cabinet Filler. 13" Depth
ACWC3012FILL	30x12" Wall Cabinet Filler. 13" Depth



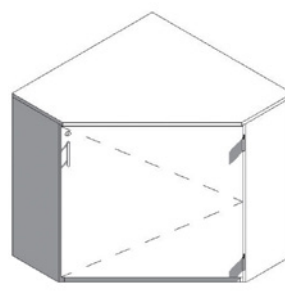
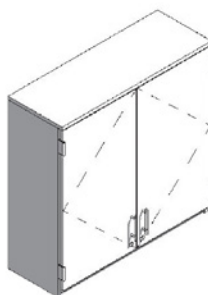
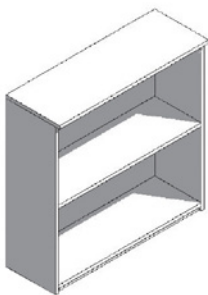
Model: ACWC3036S



Model: ACWC3036SLD



Model: ACWCC2436SLD



INNOVATIVE DESIGNS
FOR CREATIVE SPACES®